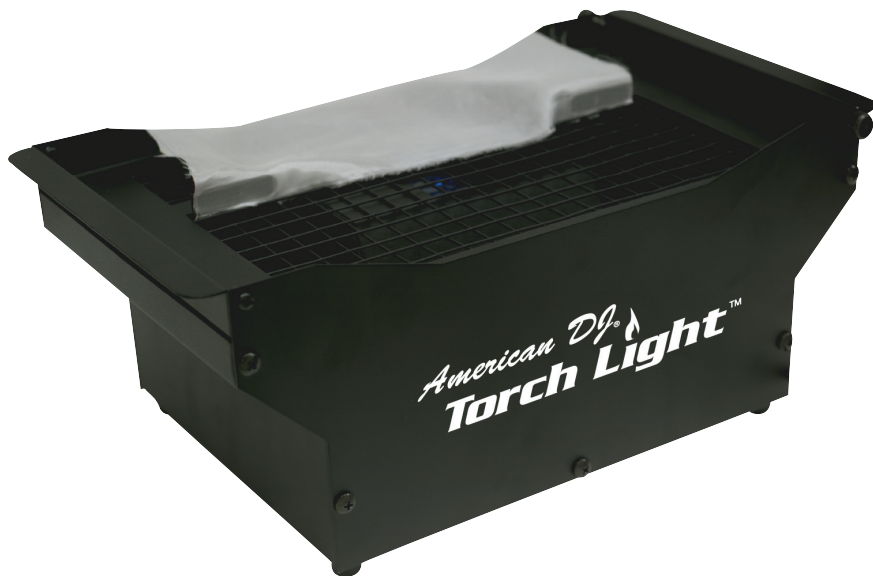


American DJ® **Torch Light™**



User Instructions

American DJ
4295 Charter Street
Los Angeles Ca. 90058
www.americandj.com

Rev 10/03

Torch Light™

General Introduction

Unpacking: Thank you for purchasing the Torch Light™ by American DJ®. Every Torch Light™ has been thoroughly tested and has been shipped in perfect operating condition. Carefully check the shipping carton for damage that may have occurred during shipping. If the carton appears to be damaged, carefully inspect your unit for any damage and be sure all equipment necessary to operate the unit has arrived intact. In the event damage has been found or parts are missing, please contact our toll free customer support number for further instructions. Please do not return the unit to your dealer without first contacting customer support.

Introduction: Please carefully read and understand the instructions in this manual thoroughly before attempting to operate this unit. These instructions contain important safety information regarding the proper use and maintenance of this unit. Please keep this manual with the unit, for future reference. The Torch Light™ produces a unique flame effect without the heat. The simulated flame effect is further enhanced by the case design that is designed to look like an ancient torch. This unit uses a silk drape cut out in the shape of a flame that must be replaced every 3-6 months of use to maintain the original effect.

Customer Support: American DJ® provides a toll free customer support line, to provide set up help and to answer any question should you encounter problems during your set up or initial operation. You may also visit us on the web at www.americandj.com for any comments or suggestions. Service Hours are Monday through Friday 9:00 a.m. to 5:00 p.m. Pacific Standard Time.

Voice: (800) 322-6337

Fax: (323) 582-2610

E-mail: support@americandj.com

To purchase parts online visit <http://parts.americandj.com>

Warning! To prevent or reduce the risk of electrical shock or fire, do not expose this unit to rain or moisture.

Caution! There are no user serviceable parts inside this unit. Do not attempt any repairs yourself, doing so will void your manufacturer's warranty. In the unlikely event your unit may require service please contact American DJ®.

Please recycle the shipping carton whenever possible.

Safety Issues: This unit may blow a fuse if the maximum allotted load of 3 amps is reached. If the fuse needs replacement, always replace the fuse with same exact type that was removed, unless otherwise instructed by an authorized American DJ® service technician. Use of a different type fuse from that which is recommended may cause fire or electric shock and will void the manufacturer's warranty.

- To reduce the risk of electrical shock or fire, do not expose this unit to rain or moisture
- Do not spill water or other liquids into or on to your unit
- Do not attempt to operate this unit if the power cord has been frayed or broken
- Do not attempt to remove or break off the ground prong from the electrical cord. This prong is used to reduce the risk of electrical shock and fire in case of an internal short
- Disconnect from main power before making any type of connection
- Do not remove the cover under any conditions. There are no user serviceable parts inside
- Never plug this unit into a dimmer pack
- Always be sure to mount this unit in an area that will allow proper ventilation. Allow about 6" (15cm) between this device and a wall
- Do not attempt to operate this unit, if it becomes damaged
- This unit is intended for indoor use only, use of this product outdoors voids all warranties
- During long periods of non-use, disconnect the unit's main power
- Always mount this unit in a safe and stable manner
- Power cords should be routed so they are not likely to be walked on, pinched by items placed upon or against them.
- Cleaning -The fixture should be cleaned only as recommended by the manufacturer. See page 7 for cleaning details
- Heat -The appliance should be situated away from heat sources such as radiators, heat registers, stoves, or other appliances (including amplifiers) that produce heat.
- The fixture should be serviced by qualified service personnel when:
 - A. The power-supply cord or the plug has been damaged.
 - B. Objects have fallen, or liquid has been spilled into the unit.
 - C. The unit has been exposed to rain or water.
 - D. The unit does not appear to operate normally or exhibits a marked change in performance.

Unit Preparation:

Before beginning initial setup of your Torch Light Flame Machine, make sure there is no evident damage caused during transportation. In the event that the unit's housing or cable is damaged, do not plug the unit in and do not attempt to use. Please contact your dealer for assistance.

1. Remove all packing materials from the Torch Light.
2. Place the Torch Light™ on a flat level surface.
3. Plug the power cord into a grounded electrical outlet with a matching power supply.
4. Turn the power switch on rear of unit to "ON" position.

Lamps:

The positioning of the lamps is pre-set and does not require any type of adjustment. Improperly positioned lamps will create deep spots of color in the flame. Should the lamps need adjustment due to shifting during transit or after the replacement of a lamp, the lamps may be angled slightly to overcome any heavy color wash. Should the lamps' positioning become incorrect, adjust them as follows:

1. To properly position the lamp the unit must be on. Use an insulated screwdriver to make any adjustment to the lamp's position.
2. The amber lamps should be angled to focus on the lower half of the silk drape.
3. Position the blue lamp to shine directly in the center of the silk drape.
4. All lamps will eventually fade or fail. Replacement lamps are available from your dealer.

Silk Flame:

Your silk flame has been specially designed and hand cut from the finest silk to interact with the airflow and lights to create the illusion of a flame. Each silk drape is applied prior to shipment and should be in the correct position. The silk drape has a life of approximately one month when used continuously in a clean environment. Additional silk drapes may be purchased through your dealer (part number z-torch/silk).

Repositioning The Flame (Silk Drape):

You may wish to reposition the flame drape to customize the effect.

1. Move the flame drape along the flame attachment bars by sliding the magnetic ends along the metallic tabs.
2. For best results, do not stretch out the ends of the silk drape as tight as it can get along the bottom. For a more realistic effect allow some play between the two ends of the silk drape, move the magnets slightly away from the side of the casing to achieve a more realistic flame effect.

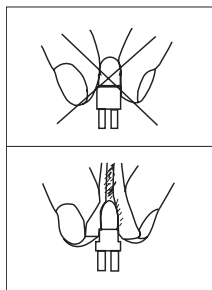
The silk drape has become creased:

You may iron the flame using a non-drip iron. Do not steam iron.

The silk drape has become frayed:

You may use a sharp pair of scissors to carefully cut the loose silk strands. Silks become frayed after a period of four weeks. This can be sooner depending on the environment.

The Torch Light™ carries a one year (365 days) limited warranty. We recommend you fill out the enclosed warranty card to validate your purchase. All returned service items whether under warranty or not, must be freight pre-paid and accompany a R.A. Number. If the unit is under warranty, you must provide a proof of purchase invoice.



Halogen Lamp Warning! This fixture is fitted with halogen lamps which are highly susceptible to damage if improperly handled. Never touch the lamps with your bare fingers as the oil from your hands will shorten lamp life. Also, never move the fixture until the lamps have had ample time to cool. Remember, lamps are not covered under warranty conditions.

Caution:

Always replace with the exact same type lamp and fuse, unless otherwise specified by an authorized American DJ® technician. Replace with anything other than the specified part can damage your unit and will void your manufactures warranty.

Warning:

If after you have replaced the lamp or fuse and you continue to blow either one, STOP using the unit. Contact customer support for further instructions, you may have to return the unit for servicing. Continuing to use the unit may cause serious damage.

Fuse Replacement:

Disconnect the unit's main power supply. Insert a standard flat head screw driver in to the fuse holder housing (located on the rear of the unit). Turn the screwdriver in a counter-clockwise direction to remove the fuse holder. Remove the old fuse and discard it, replace the fuse with the same type. Insert the fuse holder back into it's housing and turn in clockwise direction to lock the holder in place.

Lamp Replacement:

Caution! Never open the unit when in use. Always disconnect the main power and allow the fixture ample time to cool before attempting to replace the lamp. Lamp replacement has been made simple by incorporating a split dome that is retained by thumb screws. *Again, please remember to always replace with the exact same type lamp.*

1. Be sure to follow the proper procedures when handling halogen bulbs.
2. Lamp replacement has been made simple by incorporating the use of trap door type hinge top cover and thumb screws.
3. Loosen the two thumb screws on top cover.
4. Flip the top cover in an upright position.
5. Remove and replace the lamps.
6. Reassemble.

1 YEAR DAY LIMITED WARRANTY

A. American DJ® hereby warrants, to the original purchaser, American DJ® products to be free of manufacturing defects in material and workmanship for a period of one year (365 days) from the date of purchase. This warranty shall be valid only if the product is purchased within the United States of America, including possessions and territories. It is the owner's responsibility to establish the date and place of purchase by acceptable evidence, at the time service is sought.

B. For warranty service, send the product only to the American DJ® factory. All shipping charges must be pre-paid. If the requested repairs or service (including parts replacement) are within the terms of this warranty, American DJ® will pay return shipping charges only to a designated point within the United States. If the entire instrument is sent, it must be shipped in its original package. No accessories should be shipped with the product. If any accessories are shipped with the product, American DJ® shall have no liability whatsoever for loss of or damage to any such accessories, nor for the safe return thereof.

C. This warranty is void if the serial number has been altered or removed; if the product is modified in any manner which American DJ® concludes, after inspection, affects the reliability of the product; if the product has been repaired or serviced by anyone other than the American DJ® factory unless prior written authorization was issued to purchaser by American DJ®; if the product is damaged because not properly maintained as set forth in the instruction manual.

D. This is not a service contract, and this warranty does not include maintenance, cleaning or periodic check-up. During the period specified above, American DJ® will replace defective parts at its expense, and will absorb all expenses for warranty service and repair labor by reason of defects in material or workmanship. The sole responsibility of American DJ® under this warranty shall be limited to the repair of the product, or replacement thereof, including parts, at the sole discretion of American DJ®. All products covered by this warranty were manufactured after January 1, 1990, and bear identifying marks to that effect.

E. American DJ® reserves the right to make changes in design and/or improvements upon its products without any obligation to include these changes in any products theretofore manufactured.

F. No warranty, whether expressed or implied, is given or made with respect to any accessory supplied with products described above. Except to the extent prohibited by applicable law, all implied warranties made by American DJ® in connection with this product, including warranties of merchantability or fitness, are limited in duration to the warranty period set forth above. And no warranties, whether expressed or implied, including warranties of merchantability or fitness, shall apply to this product after said period has expired. The consumer's and or Dealer's sole remedy shall be such repair or replacement as is expressly provided above; and under no circumstances shall American DJ® be liable for any loss or damage, direct or consequential, arising out of the use of, or inability to use, this product.

G. This warranty is the only written warranty applicable to American DJ® Products and supersedes all prior warranties and written descriptions of warranty terms and conditions heretofore published.

H. Lamps are not covered under this or any other warranty either written or implied.

Technical Specifications:**Model: Torch**

Lamps:	3 x ZB-MR11/O 12v/20w 1 x ZB-MR11/B 12v/20w
Voltage*:	110v~60Hz / 220v~50/60Hz
Dimensions:	7" (H) x 13.5" (W) x 8.25" (D)
Colors	Orange/Blue
Weight:	8 Lbs.
Fuse:	3 Amp GMA
Duty Cycle:	None
Working Position:	Any Safe, Secure Position
Warranty:	1 Year (365 days)

*Voltage is preset at the factory and is not user selectable

Please Note: Specifications and improvements in the design of this unit and this manual are subject to change without any prior written notice.

©American DJ

American DJ Supply World Headquarters:
4295 Charter Street Los Angeles, CA 90058 USA

Tel: 323-582-2650 Fax: 323-582-2610

Web: www.americandj.com E-mail: info@americandj.com